



# HISTORIC PRESERVATION COMMISSION MEETING

City Council Chambers, 33 East Broadway Avenue Meridian, Idaho

Thursday, June 23, 2022 at 4:30 PM

---

## MINUTES

### ROLL-CALL ATTENDANCE

<u>  x  </u> Blaine Johnston, President	<u>  x  </u> Destinie Hart, Vice President
<u>    </u> Tyler J. Ricks	<u>    </u> Pam Jagosh
<u>  x  </u> John Dinger	<u>  x  </u> Jody Ault
<u>    </u> Jack Keller	

City staff present was Arts and Culture Coordinator, Cassandra Schiffler.

### ADOPTION OF AGENDA

J. Ault made motion to adopt agenda, seconded by D. Hart

All ayes

### APPROVAL OF MINUTES [ACTION ITEM]

1. **Approve:** Minutes from 5-26-22 Historic Preservation Commission Meeting

J. Dinger made motion to approve minutes, seconded by D. Hart

All ayes

### APPROVAL OF MONTHLY FINANCIAL STATEMENTS [ACTION ITEM]

2. **Approve:** Monthly Financial Statement

J. Ault made motion to approve the monthly financial statements, seconded by D. Hart

All ayes

### OLD BUSINESS [ACTION ITEMS]

3. **Discuss and Recommend:** Project Site(s) to be Added to Virtual Tour

C. Schiffler received an estimate from Hullfilm for a virtual tour of four locations along Idaho Street and two locations at Highway 16 in the amount of \$4000.

Commission Feedback:

B. Johnston stated locations on Idaho Street are a logical progression based on current tour and it will be important to capture the Highway 16 locations as well based on construction though he is unaware of current construction timeline.

B. Bauer stated that she assisted with a study in 2008 and 2019 documenting properties along Highway 16 and this report can be obtained through the State Historic Preservation Office (SHPO) and that she is not currently aware of the construction timeline.

J. Dinger made motion to approve \$4000 to contract Hullfilm to document identified locations on Idaho Street and Highway 16 for the City's virtual tour, seconded by J. Ault

All ayes

**REPORTS [ACTION ITEM]**

**4. Project Report: Meridian Speedway Historic Nomination ~ Barbara Perry Bauer, M.A, TAG Historical Research and Consulting**

B. Bauer reported that on June 4, 2022, the Idaho State Historic Review Board approved the Meridian Speedway Historic Nomination and now the nomination will move to the national level for review with the next decision announced in October 2022.

Presentation given by B. Bauer (attached).

B. Bauer suggested organizing a tour of the Meridian Speedway as part of the Commission's Historic Preservation Month activities in May 2023.

Commission Feedback:

B. Johnston inquired if SHPO or the Idaho State Historic Review Board had any comments about the nomination. *From January through June B. Bauer worked on a written argument in response to questions from these entities about non-contributing structures impacting the integrity of the original 1950 structural features of the Speedway.*

B. Johnston inquired about the difference between a historic place and a historic district. *Meridian Speedway would be listed as a historic district because of the number of buildings on the site.*

C. Schiffler stated that completing the Meridian Speedway Nomination is one of the goals in the City's Master Strategic Plan; other Strategic Plan goals that impact the Commission include utilizing the historic register to identify significant recognition of Meridian properties and investigating new locations to add to the historic register.

C. Schiffler stated the Commission should start considering signage in anticipation of the Meridian Speedway nomination being approved and asked if B. Bauer had any thoughts on what this type of signage should look like. *A plaque can be obtained through the National Parks Service but the Commission could consider additional interpretive signage along the rights of passage near the Meridian*

*Speedway and could consider applying for a Community Enhancement Grant through the Idaho State Historical Society to assist with the cost.*

D. Hart stated she would look in to the requirements for a Community Enhancement Grant in anticipation of needed signage.

B. Johnston stated the Commission might want to consider placing the Meridian Speedway on the walking tour app using the photos and narrative from the nomination.

## **NEW BUSINESS [ACTION ITEMS]**

### **5. Discuss: Reconnaissance of Historic Meridian Properties: Main Street Survey**

B. Johnston asked B. Bauer if there was any part of the Main Street Survey or the nomination of the Zamzows Mill that she could complete and bill for prior to September 30, 2022.

B. Bauer stated she mapped approximately 37 blocks between Broadway and Cherry Lane/Fairview and East 4<sup>th</sup> Street to 1<sup>st</sup> Street and that she focused on residential sites within this area. Phase I would cost \$5000 and would include fieldwork, photography, and completing Idaho Historic Sites Inventory forms.

B. Bauer stated she could begin work on the nomination of the Zamzows Mill such as research, initial PEQ form, and a site survey but she could not write the actual nomination prior to September 30, 2022.

B. Bauer suggested starting first with the Main Street Survey as it does not appear that the Zamzows building will be going anywhere anytime soon, but the survey would allow the Commission to identify and document historic structures that may be impacted by the rapid, future development in the area.

B. Johnston stated working on the survey would help the Commission start meeting the requirements for the next SHPO CLG recertification.

J. Dinger stated he would also prefer to complete the survey work first but does not want to lose sight of nominating the Zamzows Mill.

J. Ault agreed with moving forward with the mapping of the registry now and nominating the Zamzows Mill at a later date for the same reasons given by J. Dinger.

D. Hart motioned to approve funding not to exceed \$5000 for TAG Historical Research and Consulting to complete an initial survey of the area surrounding Idaho Street to be completed by September 30, 2022; seconded by J. Ault

All ayes

### **6. Discuss and Recommend: Next Project for National Historic Registry Nomination: Zamzows Mill**

The Commission decided to put work on this nomination on hold until a later date (see discussion for Item 5).

7. **Conference Information for 2022 NAPC Forum:** Cincinnati, Ohio, July 13-17, 2022  
B. Johnston encouraged Commissioners to look at information provided in the meeting packet to see if they wish to attend.
8. **Conference Information for 2022 Idaho Heritage Conference:** Idaho Heritage Conference, Pocatello September 19-22, 2022  
B. Johnston stated he thinks this conference is only in-person and does not have any virtual components.  
B. Johnston encouraged Commissioners to look at information provided in the meeting packet to see if they wish to attend.
9. **Conference Information for 2022 PastForward:** Online November 1 - 4, 2022  
B. Johnston encouraged Commissioners to look at information provided in the meeting packet to see if they wish to attend.
10. **Review Letter:** Department of the Interior Inquiry About Participation in the Development a Programmatic Agreement  
C. Schiffler stated this letter was received by the City and it was determined it should go through this Commission for review and consideration.  
B. Johnston stated he will reach out to the Department of the Interior to obtain more information.

**NEXT MEETING: July 28, 2022**

D. Hart made motion to adjourn, seconded by J. Ault

All ayes

**ADJOURNMENT**

Meeting adjourned at 5:28pm

# MERIDIAN SPEEDWAY

## NATIONAL REGISTER OF HISTORIC PLACES

June 23, 2022

# WHAT IS THE NATIONAL REGISTER OF HISTORIC PLACES?

- The National Register of Historic Places (NRHP) is the official list of properties considered important in our past and worthy of preservation. It is a program of the National Park Service, administered in Idaho by the Idaho State Historic Preservation Office (SHPO). The program recognizes buildings, sites, structures, objects, and districts that are significant in American history, architectural history, engineering, archaeology, and or/culture.
- The NRHP is largely an honorific program and it carries with it no restrictions whatsoever to a private property owner up to, and including, demolition. National Register listing only regulates the use of federal funds that may affect the property and does not impose legal requirements on the private property owner. Once your property is listed, you are free to make any alterations with private funds and do not need prior approval from our office or anyone else to do so.

# ARE THERE RESTRICTIONS TO LISTING?

- The NRHP listing does not:
- Restrict the rights of private property owners to change or dispose of their property in any way – up to and including demolition.
- Automatically provide grants or low interest loans for a property.
- Require that historic properties be restored once listed.
- Require property owners to open their property for public visitation at any time.
- Guarantee the preservation of historic properties.

# MINIMUM STANDARDS TO BE LISTED-IN THE REGISTER

- 1. 50 years old or older;
- 2. Retain their historic appearance (called "integrity"); and
- 3. Are historically important (referred to as "significant") at the local, state, or national level under one of four Criteria identified by the National Park Service. The Criteria are:
  - Criterion A: Association with events that have made a significant contribution to broad patterns of history (agriculture, mining, community planning, homesteading)
  - Criterion B: Association with the productive lives of persons significant to our past (not many properties qualify for this criterion)
  - Criterion C: Embodiment of distinctive characteristic of a type, period, or method of construction; represent the work of a master; possess high artistic values; or represent a significant vernacular structure (bridges, railroad trussels, courthouses, residences, etc.)
  - Criterion D: Properties that have yielded or may be likely to yield, information important in precontact or post-contact (archaeological sites, camps, forts, farmsteads, original town plats)



# NRHP PROCESS

- 1. Complete Preliminary Eligibility Questionnaire
- 2. Submit to SHPO for concurrence
- 3. If needed prepare Idaho Historic Sites Inventory Form
- 4. Prepare draft nomination
- 5. Submit to SHPO in January for review in preparation for Idaho Historic Sites Review Board first Saturday in June
- 6. If NRHP nomination approved the nomination is sent to the National Park Service for final approval

# HOW LONG IS THE PROCESS

- Preparing a nomination for a single property requires between 100-150 hours of research, writing, and revision, and the review process is typically between one (1) and two (2) years.

# MERIDIAN NRHP LISTED SITES

- R.H. and Jessie Bell House 137 E. Pine St.
- Clara Hill House 1123 N. Main St.
- E.F. Hunt House 49 E. State
- Meridian Exchange Bank 109 E. 2nd
- Mittleider Farmstead Historic District 575 Rumble Lane
- Mountain States Telephone and Telegraph 815 N. Main Company Building
- Halbert and Grace Neal House 101 W. Pine
- 6 Tolleth House 134 E. State Ave

# MERIDIAN SPEEDWAY APPROVED BY HISTORIC SITES REVIEW BOARD ON JUNE 4, 2022



Photos for intensive level form taken  
October 23, 2020

- The Meridian Speedway is being nominated to the National Register of Historic Places with local significance under *Criterion A* for its historical association with the *agricultural, social, and recreational history* of Meridian and Ada County. Besides its use for the annual Dairy Days, which connects residents to Meridian's agricultural history, the Speedway is one of four paved quarter-mile tracks in Idaho and the only continually running racetrack in the state. The activities of the Speedway have supported local businesses, attracting crowds of fans to events throughout the racing season, as well as bringing nationally sanctioned racing events to southwestern Idaho. For 72 years, the Meridian Speedway has been an entertainment and recreation center for southwest Idaho. The unique collaboration among local community groups created a vital sports facility that has continued to thrive as Meridian transitioned from an agricultural to an urban community.



Circle marks location of Speedway  
September 1951





(Source: Meridian Historical Society)

Ada County Dairymen's cooperative creamery began operation in 1929.

Meridian dairy center of the state.

Consolidated Creamery built 1897

1929 Dairy Days established as showcase for livestock and dairy products when creamery built.

ARTICLES OF INCORPORATION  
OF

MERIDIAN DAIRY & STOCK SHOWS, INC.

KNOW ALL MEN BY THESE PRESENTS: That we, the undersigned, all of whom are of full age and citizens of the United States, in order to form a non-profit corporation for the purposes hereinafter stated, have this day voluntarily associated ourselves together for the purpose of forming a non-profit corporation under the provisions of Title 29, Chapter 10 of the Idaho Code Annotated 1938, as amended, entitled "Nonprofit Cooperative Associations.", and we hereby certify as follows to-wit:-

ARTICLE I.

That the name of the Corporation shall be MERIDIAN DAIRY & STOCK SHOWS, Inc.

ARTICLE II.

That this Corporation is not formed for pecuniary profit; and that the purposes and objects for which it is formed are as follows:

1. To promote and encourage the breeding, raising, and sale of pure-bred dairy and other livestock, agriculture and manufacturing.
2. To promote and encourage the dairy industry and its development in all of its phases, including the manufacture and sale of dairy products of all kinds; and to encourage general domestic industries.
3. To become the official sponsor of and to promote and hold dairy and livestock shows and sales and allied performances annually or more often as may be desired, at Meridian, Ada County, Idaho and not conducted for profit.

Meridian Dairy & Stock Shows, Inc.

Incorporated April 12, 1948

Idaho Secretary of State





“The association and these grounds are entitled to the support of all you farmers and Meridian townspeople. This is the first tree to be planted and it is a symbol of what we can build for the future and the boys and girls of Boise Valley and America.”

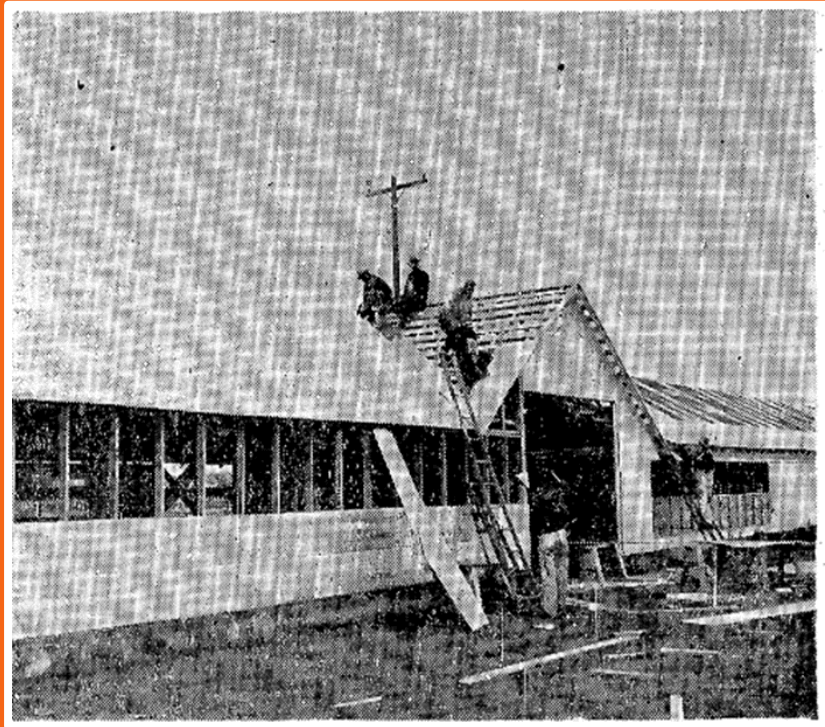
*W.L. Hendrix president of Idaho State Dairymen's association and secretary of the American Dairy Association. May 27, 1949*

1949 aerial view of Dairy show grounds. Note the canvas-covered livestock sheds on the right. The grounds were dedicated May 27, 1949 following Dairy Day parade.

Photo: IDS May 28, 1949.

# BUILDINGS

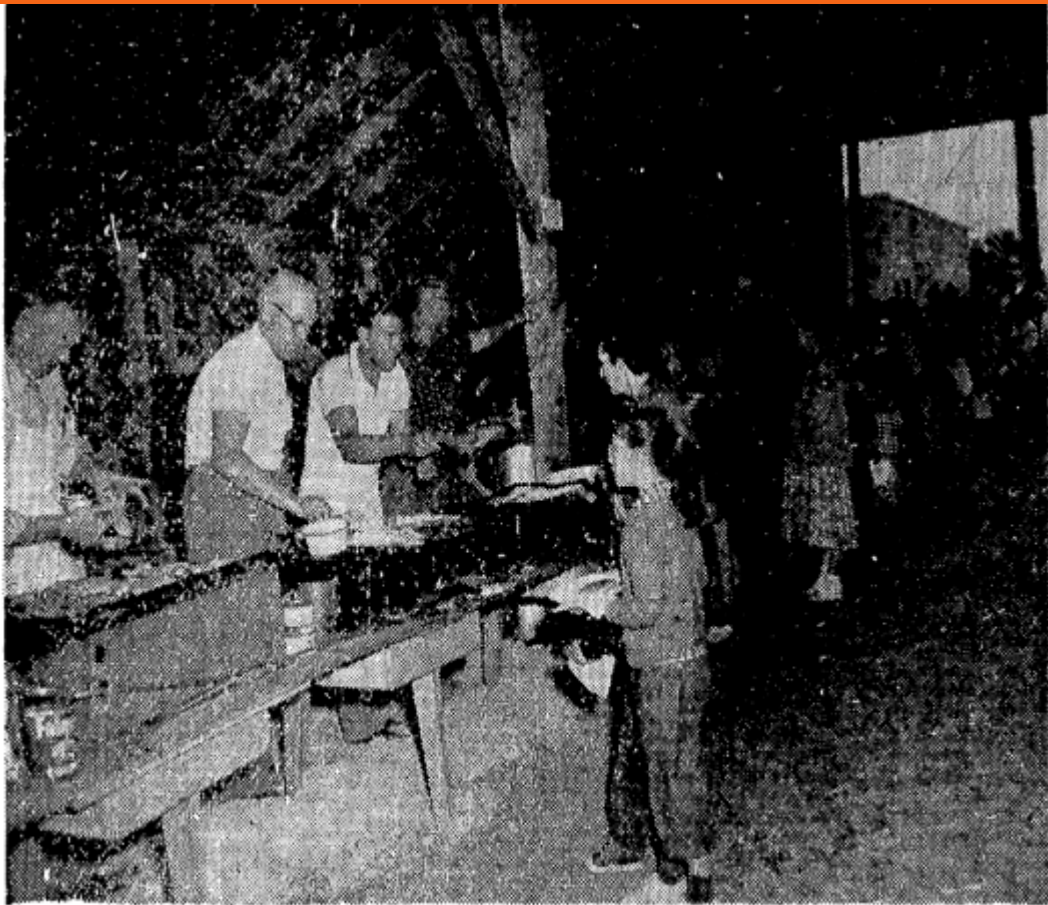
Cattle Exhibit Building



Workman rebuilt a portion of cattle exhibit building when it was destroyed by fire in May 1958.

Cattle Exhibit Building 2020





MEMBERS of the Meridian Dairy Show board of directors cooked and served pancakes, sausage, and eggs to approximately 3000 persons Tuesday afternoon and evening as the annual Dairy show started off again with a pancake feed. Shown are some "hungry" residents getting their plates filled by board members.

Pancake breakfast 1956



BEARDS ARE SEEN sprouting all over Meridian these days, but there's a purpose to them. The men folks in Meridian are getting ready for the annual Meridian Dairy show June 5-7 and the pageant being held as part of the dairy event. Shown are members of the Dairy Show board making plans for the three-day event which will include, in addition to the pageant two nights, a parade, county fair, the crowning of a queen, jalopy races and other activities. Shown left to right seated, are Roy Alger, Melvin Laine, Chet Eggers, president, Dennison Ambrose, chairman of the committee making plans for the pageant, and Ralph Madden; standing are Herald Cox, secretary and Dale Bates, immediate past president of the board. (Photo by Horton.)

Planning for Dairy Days 1958



1950 – Meridian Athletic Association organized Dec. 13, 1950

1951 – dirt track built at dairy show grounds

1951 – Lights from old Boise Junior College (BSU) purchased to light track for races and softball and baseball games.

1953 – Meridian Racing Association organized as an affiliate of the MAA

Midgets at Meridian Speedway circa 1955. Courtesy Idaho Racing Historical Society

# MIDGET AUTO RACING

**Meridian Speedway**

(at South Curve in Meridian)  
New Oiled and Lighted Track

**Saturday, June 16, 8:30 P. M.**

**Time Trials 7:30 P. M.**

**Adults \$1.00 . . . Kids (Under 12) 35c**

All proceeds used for improving **speedway** and recreation facilities for the benefit of the entire Boise Valley. Sponsored by the **MERIDIAN ATHLETIC ASSOCIATION** and sanctioned by Idaho State Automobile Racing Association.

Advertisement for Midget Auto Race June 15, 1951 IDS

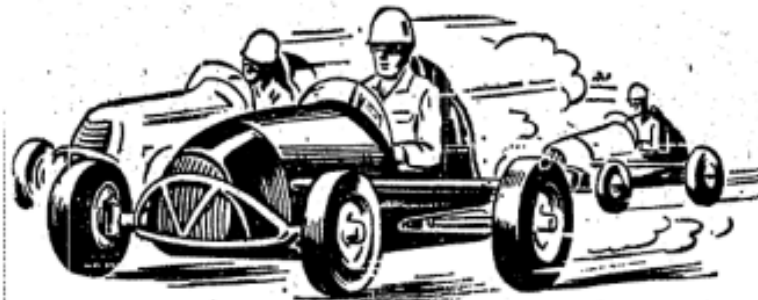
# THE LAST RACE OF THE SEASON!

*Combination Midget and Motorcycle Races*

**SUNDAY**

★ **4 Midget Auto Races** ★ **4 Motorcycle Races**

At the Meridian Dairy Show Grounds at South Curve in Meridian



Sponsored by the Meridian Athletic Association

All Proceeds Go to Park Development for the Improvement of Playgrounds

Admission 1.00, inc. tax for Adults; 50c, inc. tax. for Children.

Advertisement October 21, 1951 IDS

# MERIDIAN SPEEDWAY 1959 AND 1964



# THE CENTER OF COMMUNITY SINCE 1949



Meridian Dairy Days Photo)



Meridian Speedway photo

